



NEVADA SAGEBRUSH  
ECOSYSTEM PROGRAM



# Sagebrush Ecosystem Program Update

*Kelly McGowan, Program Manager*

**Sagebrush Ecosystem Council**

**Agenda Item 10**

**October 8, 2020**

*[sagebrushco.nv.gov](http://sagebrushco.nv.gov)*



# Conservation Credit Projects

- 22 credit projects
- 13 project proponents participating in State sponsored funding
- 9 project proponents are self funded
- Every project has very high suitability for sage-grouse
- Over 120,000 acres enrolled (within 6 counties)



**Kelly McGowan**  
*Program Manager*

**Jim Lawrence**  
*Deputy Director*

**Bradley Crowell**  
*Director*

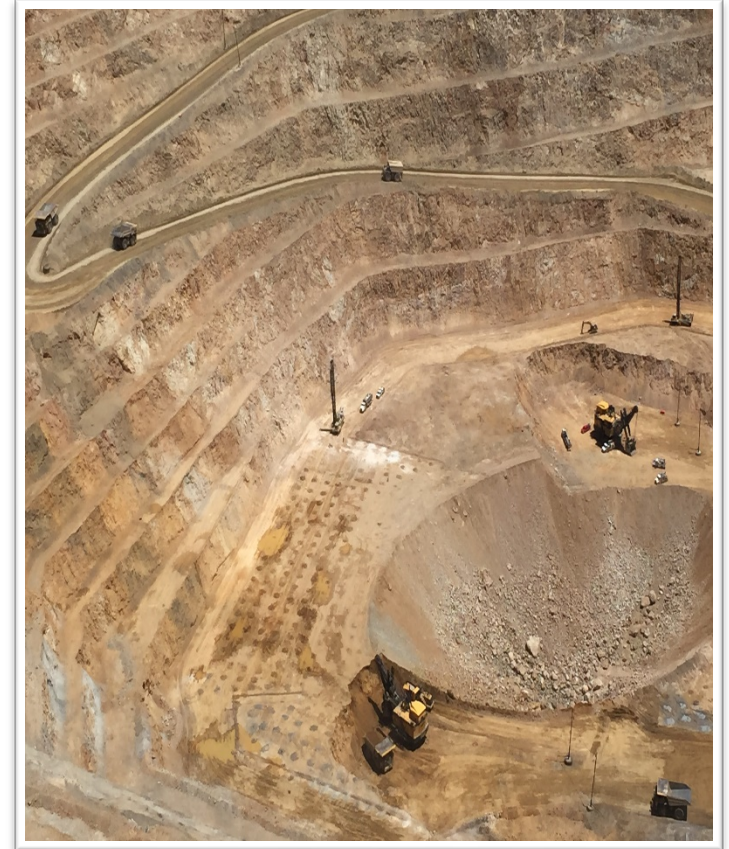


Nevada Department of  
**CONSERVATION &  
NATURAL RESOURCES**



# Debit Projects

- 31 active debit projects
- 13 additional projects in early planning stages
- They include mining, solar, exploration (mineral, oil and gas), geothermal, pipelines, and overhead powerlines
- 10 projects have completed mitigation, 3 internal and 7 external transactions



**Kelly McGowan**  
*Program Manager*

**Jim Lawrence**  
*Deputy Director*

**Bradley Crowell**  
*Director*



Nevada Department of  
**CONSERVATION &  
NATURAL RESOURCES**

PROJECT NAME (# ON MAP)	CREDITS	COUNTY	ACRES CONSERVED	WAFWA MGMT. ZONE	STATE SEED FUNDED
<b>TRANSFERRED CREDITS</b>					
Cottonwood Ranch	3	Elko	6	IV	Yes
Crawford Cattle – Sonoma	467	Humboldt	1,498	III	Yes
Crawford Cattle – Snowstorms	527	Elko, Humboldt	2,600	IV	Yes
Estill Ranch	22	Washoe	346	V	No
Heguy Ranch	59	Elko	6,490	IV	Yes
Tumbling JR Ranch*	2,514	Elko, White Pine	5,868	III	Yes
West IL Ranch*	248	Elko	158	IV	No
<b>TOTAL</b>	<b>3,840</b>		<b>16,966</b>		
<b>AVAILABLE CREDITS</b>					
Cottonwood Ranch	708	Elko	1,002	IV	Yes
Crawford Cattle – Snowstorms	1,348	Elko, Humboldt	7,931	IV	Yes
Estill Ranch	618	Washoe	2,706	V	No
Eureka Livestock	1,718	Eureka	1,623	III	Yes
Heguy Ranch	707	Elko	6,490	IV	Yes
Humboldt Ranch - Hot Lake*	694	Elko	198	IV	No
Johns Ranch	164	Elko	1,073	IV	Yes
RDD	740	Humboldt	1,094	V	Yes
Tumbling JR Ranch*	1,663	Elko, White Pine	3,882	III	No
West IL Ranch*	2,180	Elko	1,539	IV	No
<b>TOTAL</b>	<b>10,545</b>		<b>27,544</b>		

\* Indicates credit projects intended for internal transfers.

PROJECT NAME (# ON MAP)	CREDITS	COUNTY	ACRES CONSERVED	WAFWA MGMT. ZONE	STATE SEED FUNDED
<b>ANTICIPATED CREDITS</b>					
<b>Adobe Peak*</b>	TBD	Elko	10,901	IV	No
<b>Cave Valley Ranch</b>	TBD	Lincoln	1,769	III	No
<b>Coleman Valley Ranch</b>	TBD	Washoe	1,137	V	Yes
<b>Crawford Cattle – Calico Mtn</b>	TBD	Humboldt	5,131	IV	Yes
<b>East IL Ranch*</b>	TBD	Elko	23,721	IV	No
<b>Foster Ranch</b>	TBD	Humboldt	6,094	V	Yes
<b>Getch Lands</b>	TBD	Humboldt	6,229	IV	No
<b>Humboldt Ranch – ToeJam*</b>	TBD	Elko	5,330	IV	No
<b>Owl Creek Ranch</b>	TBD	Elko	5,351	III	Yes
<b>Secret Pass Ranch</b>	TBD	Elko	10,421	III, IV	Yes
<b>Washoe Livestock</b>	TBD	Washoe	799	V	No
<b>TOTAL</b>	<b>~29,083</b>		<b>76,883</b>		
<b>CUMULATIVE TOTAL</b>	<b>~43,468</b>		<b>121,393</b>		

\* Indicates credit projects intended for internal transfers.

PROJECT NAME (# ON MAP)	TOTAL DEBITS*	COUNTY	ACRES OF DIRECT IMPACT	WAFWA MGMT. ZONE
<b>DEBITS MITIGATED</b>				
Avocado Exploration	38	Eureka	68	III
Bald Mountain Mine – Phase 1	2,514	White Pine	2,521	III
Baltazor	254	Humboldt	0	V
Couer Rochester	594	Pershing	2,567	III
Greater Phoenix	211	Lander	513	III
Greater Phoenix – Philadelphia Expansion	4	Lander	203	III
Midas Exploration	19	Elko	50	IV
Newcrest Exploration – Phase 1	3	Elko	10	IV
Fish Springs Solar	51	Washoe	10	V
Western Oil Exploration	14	White Pine	24	III
<b>TOTAL</b>	<b>3,702</b>		<b>5,966</b>	
<b>DEBITS OUTSTANDING/ANTICIPATED</b>				
Bald Mountain Mine – Later Phase	2,737	White Pine	2,745	III
Big Ledge	TBD	Elko	TBD	IV
Carlin Vanadium Exploration	62	Elko	86	III
Gibellini	TBD	Eureka, Nye, White Pine	TBD	III
Goldrush	TBD	Eureka, Lander	TBD	III
Jerritt Canyon Exploration	129	Elko	384	IV
Lone Tree Mine – Buffalo Mtn	675	Humboldt	0	III
Long Canyon Mine – Phase 2	1,957	Elko	815	III, IV
McGinness Hills – Phase IV	TBD	Lander	TBD	III
National Exploration	30	Humboldt	40	IV
Pony Creek Exploration	131	Elko	150	III
Relief Canyon	33	Lander	0	III
Robertson	TBD	Lander	TBD	III
Robinson	TBD	White Pine	TBD	III
Round Mtn	41	Nye	264	III

\* Indicates total debits as opposed to corresponding credits required to offset them, which depends on proximity and permanent debits.

PROJECT NAME (# ON MAP)	TOTAL DEBITS*	COUNTY	ACRES OF DIRECT IMPACT	WAFWA MGMT. ZONE
<b>DEBITS OUTSTANDING/ANTICIPATED (CONT.)</b>				
Ruby Vista	1	Elko	2	III
Scruffy Oz	TBD	Lander	TBD	III
Snow Canyon Closure	2	Elko	76	IV
Spring Valley	TBD	Pershing	TBD	III
TSP	4	Elko, Eureka	1	IV
Twin Creeks Mine – Sage Tailings	33	Humboldt	0	IV
Western Lithium	1,375	Humboldt	5,169	V
<b>TOTAL</b>	<b>7,219</b>		<b>9,732</b>	
<b>CUMULATIVE TOTAL</b>	<b>10,903</b>		<b>15,698</b>	

\* Indicates total debits as opposed to corresponding credits required to offset them, which depends on proximity and permanent debits.